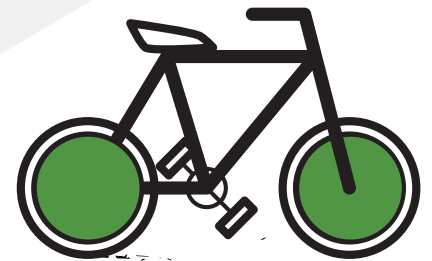


CYCLING SAFE



Mt. Lebanon is a safe place but our streets can be very busy. We continue to work to educate pedestrians, drivers and cyclists on ways to co-exist peacefully and safely on our avenues.

- Wear **bright and reflective** clothing.
- Use a **front headlight** if riding at night.
- Use a mirror.
- **Signal** at all turns.
- **Don't assume** anyone else can see you.
- It can be safer to **take the whole lane** than riding a bit to the left.
- **Flashing lights** make it easy for others to see you.
- Wear all appropriate **safety equipment**, including a helmet.
- **Avoid puddles**, which can mask a pothole.
- Make sure you **ride far enough from parked cars** to leave room for a door to open.
- **Follow all traffic laws** and signals.
- **Do not make sudden movements.**
- Be careful of slick spots, especially painted areas on roads.
- **Ride in the flow** of traffic.
- Do not take a driver's signal for granted.
- **Don't stop in the blind spot** of adjacent cars at red lights.
- **Make sure pedestrians hear you** coming.
- **It's illegal to ride on sidewalks** in the business district.
- Ride to the right if you are driving slowly.



FOR MORE INFORMATION PLEASE VISIT MTLEBANON.ORG/LOOKUPLEBO